



2022 ANNUAL REPORT





Why we exist

The Problem

We exist because human beings live, work and die in trash dump communities, and we feel commanded to help them and show them Christ. They live in despair in every way imaginable.

What is a trash dump community?

A trash dump community is one where people set up a community within or adjacent to an open trash dump. They build their homes from trash. They make a living by picking through the trash for food and recyclables. Most of them are multi-generational. They lack access to education, proper nutrition, health care, livelihood, safe housing and discipleship.

How bad is it?

- Over 15 million people live in trash dump communities, and that number has risen every year since 2017
- The average life expectancy is 35 years old, and 30% of infants die in early childhood (UNESCO)
- They face daily violence, exposure to disease and elements, mental illness, injury and trauma

Who We Are

The Vision

Hope and Opportunity for all people living in trash dump communities

That means access to opportunities such as education, nutrition, health care, and livelihood and exposure to the real source of hope, Jesus Christ

How do we do this?

Mission Statement: Trash Mountain Project exists to develop Christ-centered environments for children and families living in trash dump communities worldwide.

We create an environment through our international partners where the people are given opportunities they would never know and are shown the love of Christ lived out amongst them.



What Makes Us Different?



Local Partners

We use indigenous leaders in order to bypass 10-15 years of cultural acclimation and trust building. The leaders we partner with are already trusted and doing something about the problem.



Where We Work

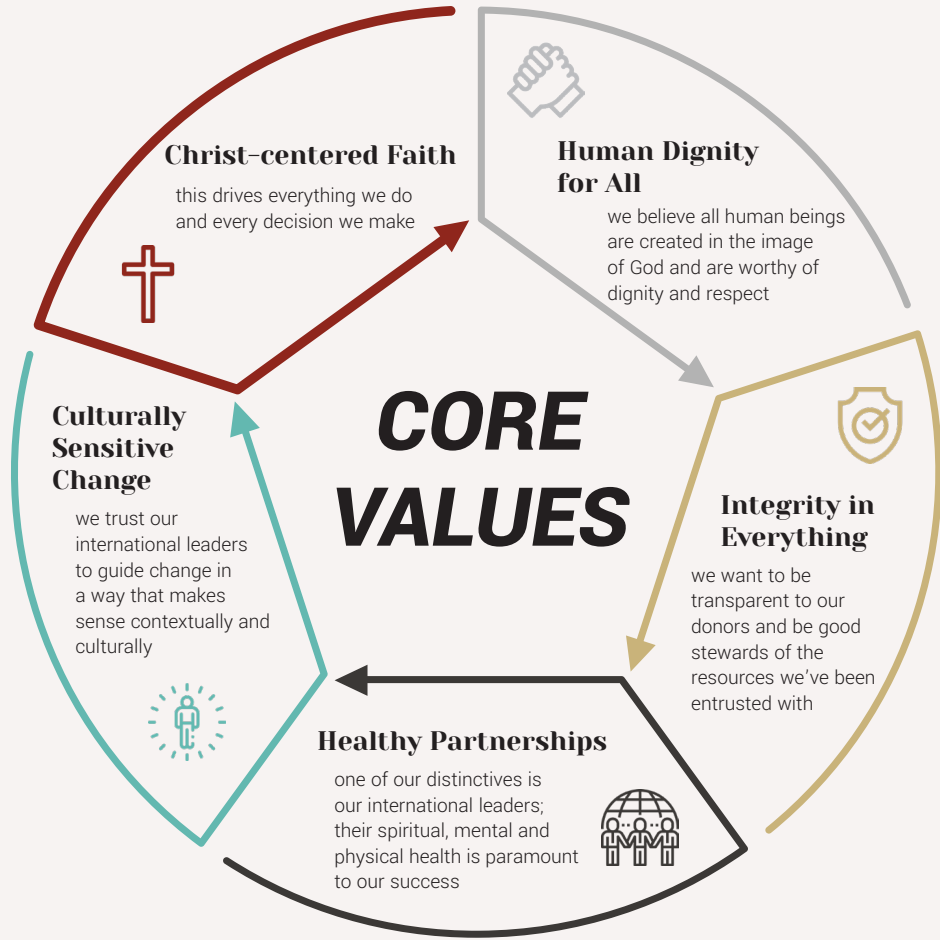
We work in trash dump communities where the people are destitute and violence is rampant.



Who We Help

The people in these communities are so far below the poverty line that most organizations don't want to help due to the difficulty in showing success.





CORE VALUES

Christ-centered Faith

this drives everything we do and every decision we make



Human Dignity for All

we believe all human beings are created in the image of God and are worthy of dignity and respect



Integrity in Everything

we want to be transparent to our donors and be good stewards of the resources we've been entrusted with



Healthy Partnerships

one of our distinctives is our international leaders; their spiritual, mental and physical health is paramount to our success



Culturally Sensitive Change

we trust our international leaders to guide change in a way that makes sense contextually and culturally



Our Programs



NAIROBI, KENYA

COMMUNITY LEADERSHIP

Walking into Anne's home, it's immediately apparent this is not a place anyone should be living. A tree recently crashed onto the roof and brought nearly the entire house down. A bed is wedged below the crumbling roof, and darkness blankets the entire interior.

This makeshift house is built on the foundation of trash. Her daughter is cooking at the front of the home on an open flame, and right next to the door, a newborn is resting under the cover of a mosquito net.

Our partners at DADREG offered Anne the opportunity to escape this way of living and be housed elsewhere. Yet she declined the opportunity. Why would she say no? Who would want to continue to live this way and be subjected to such poor living conditions?


Anne explained, "I had to prioritize others first." She wanted other women in situations like hers to have the opportunity to be relocated before herself. What a true act of selflessness in the face of adversity.

In addition to compassion for others, she has hope for herself and said, "My vision is very sharp. In two years, I will not be in the dumping site." Anne's resilience, determination and compassion inspire us to continue to advocate for the people in these communities.






HONDURAS
One Community



DOMINICAN REPUBLIC
Niños con una Esperanza
(Kids With a Hope)
One Community



PHILIPPINES
TMP Philippines
Five Communities



KENYA
Dandora Dumpsite
Rehabilitation Group
(DADREG)
One Community



INDONESIA
Sensitive area due
to persecution
Six Communities

Our Approach

PROBLEM

Cycle of Despair

caused by living and working in trash dump communities

1

RESEARCH

we need to know the community, the culture, and the country so that we are culturally sensitive and more effective

2

RELATIONSHIP

Find and develop relationships with local leaders (our partners)

3

PLANNING

Work with our partners to identify root causes of the problem in their context along with which lines of effort will be most effective

4

EXECUTION

Develop resources and implement the lines of effort in the community with our international partners leading the way

5

INDEPENDENCE

Ongoing process of planning for eventual personal and/or community independence

**DESIRED
END STATE**

Cycle of Hope

caused by access to opportunity and exposure to true hope



This is a long-term approach and takes years to see effective change in a community.

We are committed to staying the course.

Operations



STAFF

Brett Durbin

Executive Director

Marianne Baumchen

Director of Accounting and HR

Shelley Setchell

Regional Director, Latin America

Dr. Dave Henry

Director of Discipleship and
Strategic Development

Carol Mammoliti

Donor Relations

BOARD OF DIRECTORS

Ken Vander Hart • Chairman

Harvest Financial Group – Co-founder and
President

Jaelle Durbin • Secretary

Co-founder

Cindy Wilson • Treasurer

Evergry – HRBP Director

Dr. Michael Browning, DDS • Director

Sunflower Smiles Pediatric Dentistry – Owner
and Pediatric Dentist

Brett Durbin • Director

Trash Mountain Project – Co-founder and
Executive Director

Mike Tindell • Director

Coal Creek Construction – President

Tim Wilson • Director

Lighthouse Bible Church – Pastor



Financials



Consolidated Statement

	Fiscal Year 2021 06/01/21 - 05/31/22	Fiscal Year 2020 06/01/20 - 05/31/21
Consolidated Statement		
Income		
Ordinary Income		
Stock	31,443	38,280
Income	1,261,642	1,429,528
Total	1,293,085	1,467,808
Other Income		
Non Cash Contributions	-	-
Miscellaneous Income	-	5,600
PPP Forgiveness Income	86,340	55,300
Income from Merch Sales	-	18
Gain/Loss on Assets	222	175
Security Sale Proceeds	(4,107)	1,845
Interest Income, Dividends	619	983
Total	83,074	63,921
Expense		
Ordinary Expense		
Development/Fundraising	149,859	116,442
Program Services	1,094,325	1,050,741
Management & General	270,416	239,202
Total	1,514,600	1,406,385
Other Expense		
COGS & Sales Tax Remitted	548	-
Basis in Securities Sold	-	-
Total	548	-
Assets		
Current Assets	268,372	489,875
Fixed Assets	101,320	97,692
Total	369,692	587,567
Liabilities & Equity		
Current Liabilities	16,103	23,748
Long Term Liabilities (PPP Loan)	-	71,240
Total Equity	353,589	492,579
Total	369,692	587,567
Net		
Net Ordinary Income	(221,515)	61,423
Net Other Income	82,525	63,921
Net Income by Fiscal Year	(138,990)	125,344
Balance Forward	492,580	367,236
Balance Year End	353,590	492,580

The numbers provided for Fiscal Year 2021 will be audited Fall 2022.

We take stewardship and financial transparency very seriously at TMP. Every year, we undergo an independent audit to give donors confidence and to hold us accountable.

To date, we have passed all independent audits with zero incidents. Audit reports can be found on the Financial page of our website, trashmoutain.com.





We **do not** take one cent from your **designated** donation for administrative fees

100% goes to the program of your choice

We are 100% **debt free**

Basecamp

This is how we are able to do the 100% model. Basecamp covers all of our administrative costs including salaries.

95

donors that gave to Basecamp last year

Recurring Givers

This is what allows us to budget and plan for the future.

410

donors that give on a recurring basis

Spoken 2021

This is our annual benefit event.

186 people donated **\$263,180**

Income and Expenses

Amount Raised \$ 1,293,085

Amount Invested \$ 1,514,600

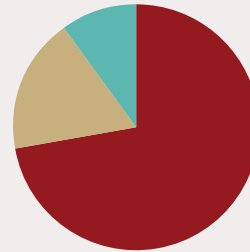


In 2015 the ECFA (Evangelical Council for Financial Accountability) announced the accreditation of Trash Mountain Project. Our continuing accreditation with the ECFA is just one more step in the process of following God's leading with the resources He has entrusted to this important mission.

The Platinum Seal of Transparency indicates that we share clear and important information with the public about our goals, strategies, capabilities, achievements and progress indicators that highlight the difference we are making in the world.

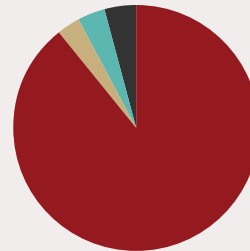
To date, we have passed all independent audits with zero incidents. Audit reports can be found on the Financial page of our website.

Allocation of Expenses



- 72% • Programs
- 18% • Management & General
- 10% • Development

657 Total Donors



- 586 Individuals
- 21 Corporations
- 23 Foundations
- 27 Churches

Direct Aid

Budget for 2022

Honduras	\$290,648
Dominican Republic	\$190,233
Philippines	\$193,579
Southeast Asia	\$43,831
Kenya	\$24,000
Total	\$742,291

ALL NUMBERS ARE FOR THE 2022 CALENDAR YEAR



What's Next?

Community sponsorships are the next step. While we have focused on them in the past, we believe that community sponsorships will take us forward in growth. Here's why. Turning the tide away from despair in trash dump communities means affecting change for everyone in the community. Our efforts focus on the broad range of issues these communities face, and we help people face these issues together.

Here's our part. With your financial sponsorship, we enable the leaders in the trash dump communities to work in ways that bring the most beneficial changes. Every community is unique. Every leader is unique. We believe that God is equipping these leaders to bring His hope to their communities.

**We need to raise
\$375,000 before
December 31st**

What that will cover:

Community Sponsorship to fund all communities	\$265,000
General TMP Operating Budget	\$110,000

How you can help us accomplish this goal:

Online Giving	trashmountain.com
Mail a Check	4110 NW 62nd St., Ste B, Topeka, KS 66618
Call Us	785-246-6845

Please contact us with any questions you may have.



4110 NW 62nd St. Ste B • Topeka, KS 66618 • 785-246-6845 • info@trashmountain.com

We are a 501(c)(3) non-profit organization. All contributions to Trash Mountain Project, Inc. are tax deductible under section 170 of the Internal Revenue Code. Trash Mountain Project, Inc. EIN# 26-4775012



**TRASH
MOUNTAIN
PROJECT**

live the command